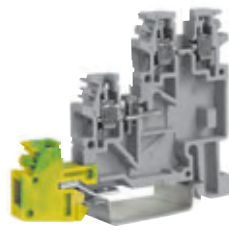


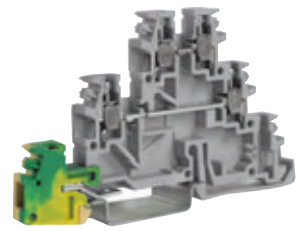
On two and three levels

with UL94V-0 polyamide insulating body

- 3 feed-through levels
- 3 levels + earth connection
- to be mounted onto TH 35-7,5 and TH 35-15 type rails - according to IEC 60715 Std.
- available in grey RAL 7042 and beige RAL 1001 colours



with earth connection on lower level



with earth connection on lower level and feed-through on intermediate and upper levels

The /GR tag indicates the grey colour version.

(*): 24 A factory wiring only

grey version	
beige version	
(Ex)i version	
TECHNICAL CHARACTERISTICS	
function / type	
rated cross-section	(mm ²)
connecting capacity	
flexible	(mm ²)
rigid	(mm ²)
max. flexible with ferrule (mm ²)-ferrule type	
rated voltage / rated current / gauge	conf. to IEC 60947-7-1
rated voltage / rated current / AWG / tightening torque value	UL
(Ex e) rated voltage	(V)
rated impulse withstand voltage / pollution degree	
insulation stripping length	(mm)
tightening torque value (test / recommended)	(Nm)
height / width / thickness	TH/35 7,5 mm
height / width / thickness	TH/35 15 mm
height / width / thickness	G32

TLE.2/GR	Cat. No. TL400GR
TLE.2	Cat. No. TL400
TECHNICAL CHARACTERISTICS	
function / type	2 levels + earth for actuators
rated cross-section	2,5
connecting capacity	
flexible	0,2 ÷ 4
rigid	0,2 ÷ 4
max. flexible with ferrule (mm ²)-ferrule type	2,5 - WP25/14
rated voltage / rated current / gauge	250 V / 24 A / A3
rated voltage / rated current / AWG / tightening torque value	600 V / 20 A (*) / 20 ÷ 12 AWG / 0,4 Nm
(Ex e) rated voltage	-
rated impulse withstand voltage / pollution degree	4 kV / 3
insulation stripping length	8
tightening torque value (test / recommended)	0,4 / 0,8
height / width / thickness	52 / 62,5 / 6,2
height / width / thickness	60 / 62,5 / 6,2
height / width / thickness	-

TLD.2/GR	Cat. No. TL200GR
TLD.2	Cat. No. TL200
TLD.2 (Ex)i	Cat. No. TL300
TECHNICAL CHARACTERISTICS	
function / type	3 feed-through levels
rated cross-section	2,5
connecting capacity	
flexible	0,2 ÷ 4
rigid	0,2 ÷ 4
max. flexible with ferrule (mm ²)-ferrule type	2,5 - WP25/14
rated voltage / rated current / gauge	250 V / 24 A / A3
rated voltage / rated current / AWG / tightening torque value	600 V / 15 A / 20-12 AWG / 0,6 Nm
(Ex e) rated voltage	-
rated impulse withstand voltage / pollution degree	4 kV / 3
insulation stripping length	8
tightening torque value (test / recommended)	0,4 / 0,8
height / width / thickness	52 / 85 / 6,2
height / width / thickness	60 / 85 / 6,2
height / width / thickness	-

TDE.2/GR	Cat. No. TL500GR
TDE.2	Cat. No. TL500
TECHNICAL CHARACTERISTICS	
function / type	2 feed-through levels + earth
rated cross-section	2,5
connecting capacity	
flexible	0,2 ÷ 4
rigid	0,2 ÷ 4
max. flexible with ferrule (mm ²)-ferrule type	2,5 - WP25/14
rated voltage / rated current / gauge	250 V / 24 A / A3
rated voltage / rated current / AWG / tightening torque value	600 V / 20 A (*) / 20 ÷ 12 AWG / 0,4 Nm
(Ex e) rated voltage	-
rated impulse withstand voltage / pollution degree	4 kV / 3
insulation stripping length	8
tightening torque value (test / recommended)	0,4 / 0,8
height / width / thickness	52 / 85 / 6,2
height / width / thickness	60 / 85 / 6,2
height / width / thickness	-

APPROVALS



ACCESSORIES

End sections	grey beige intermedio
Permanent cross connection	
Rated current carrying capacity of jumper	(A)
Switchable cross connection	
Multiple common bar	250 mm
Shunting screw and sleeve	
Coloured partition	red, green, white
Cross connection barrier	red
Test plug socket	
Test plug	
Modular test plug	
End section for modular test plug	
Numbering strip	
Warning plate	on adjacent terminal blocks
Cover for cross-connection	
Marking tag	printed or blank
End bracket	
Mounting rail according to IEC 60715 Std.	

Type	Cat. No.
TLS/PT/GR	TL101GR
TLS/PT	TL101
PM/20/2 poles	PM202
PM/30/3 poles	PM303
PM/30/5 poles	PM305
PM/30/10 poles	PM310
24	
POS/41	POS41
PMP/02	PMP02
CPM/21	CPM21
DFU/3	DU03..
DFM/400	DF400
PSD/D	PD004
SDD/1	DD001
-	
SNZ/60	SN007
-	
PRP/5	PRP05
CNU/8-CSC	NU...-CS...
BTU for PR/DIN and PR/3	BT005
BTO for PR/3 only	BT007
BT/3 for PR/3 only	BT003
-	
PR/3/AC of steel	PRO03
PR/3/AS same with slots	PRO05

Type	Cat. No.
TLD/PT/GR	TL201GR
TLD/PT	TL201
TLD/PI	TL202
PM/20/2 poles	PM202
PM/30/3 poles	PM303
PM/30/5 poles	PM305
PM/30/10 poles	PM310
24	
POS/41	POS41
PMP/41	PMP41
CPM/21	CPM21
DFU/3	DU03..
DFM/400	DF400
PSD/D	PD004
SDD/1	DD001
-	
SNZ/60	SN007
-	
PRP/5	PRP05
CNU/8-CSC	NU...-CS...
BTU for PR/DIN and PR/3	BT005
BTO for PR/3 only	BT007
BT/3 for PR/3 only	BT003
-	
PR/3/AC of steel	PRO03
PR/3/AS same with slots	PRO05

Type	Cat. No.
TLD/PT/GR	TL201GR
TLD/PT	TL201
PM/20/2 poles	PM202
PM/30/3 poles	PM303
PM/30/5 poles	PM305
PM/30/10 poles	PM310
24	
POS/41	POS41
PMP/02	PMP02
CPM/21	CPM21
DFU/3	DU03..
DFM/400	DF400
PSD/D	PD004
SDD/1	DD001
-	
SNZ/60	SN007
-	
PRP/5	PRP05
CNU/8-CSC	NU...-CS...
BTU for PR/DIN and PR/3	BT005
BTO for PR/3 only	BT007
BT/3 for PR/3 only	BT003
-	
PR/3/AC of steel	PRO03
PR/3/AS same with slots	PRO05